



The Nevada Conservation Credit System (CCS)

State-Managed Lands and Greater Sage Grouse Habitat

Thursday, August 3, 2017

Sagebrush Ecosystem Technical Team (SETT)
Kelly McGowan, Program Manager



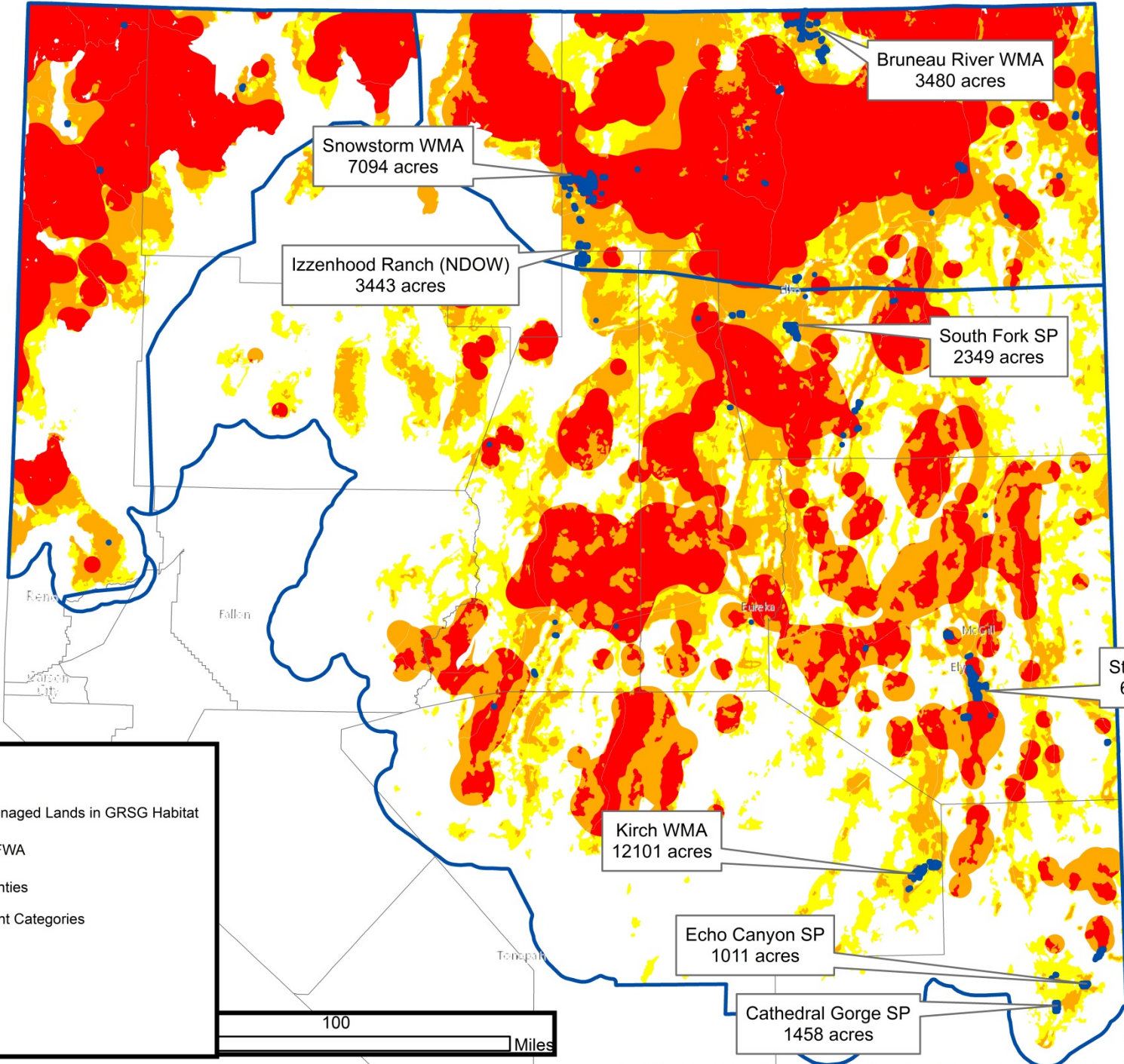
State-Managed Lands in GRSG Habitat

State-Managed Lands in GRSG Habitat Management Categories	Approx. Acres
PHMA	11,500
GHMA	9,696
OHMA	14,559
TOTAL	35,755



State-Managed Lands in GRSG Habitat

State-Managed Lands with Greater than 1,000 acres in GRSG Habitat Management Categories	Approx. Acres
Bruneau River Wildlife Management Area	3,480
Cathedral Gorge State Park	1,458
Echo Canyon State Park	1,011
Izzenhood Ranch Wildlife Management Area	3,443
Kirch Wildlife Management Area	4,722
Snowstorm Wildlife Management Area	7,094
South Fork State Park	2,349
Steptoe Wildlife Management Area	6,092
Total	29,649 (83%)



Stunak

Reno

Fallon

Kearney
City







Tenopah

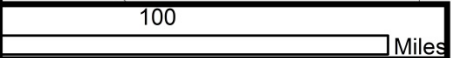
Eureka

Elko

McCall

Legend

-  State Managed Lands in GRSG Habitat
-  NV_WAFWA
-  NV_Counties
- GRSG Management Categories**
-  PHMA
-  GHMA
-  OHMA



Bruneau River WMA
3480 acres

Snowstorm WMA
7094 acres

Izzenhood Ranch (NDOW)
3443 acres

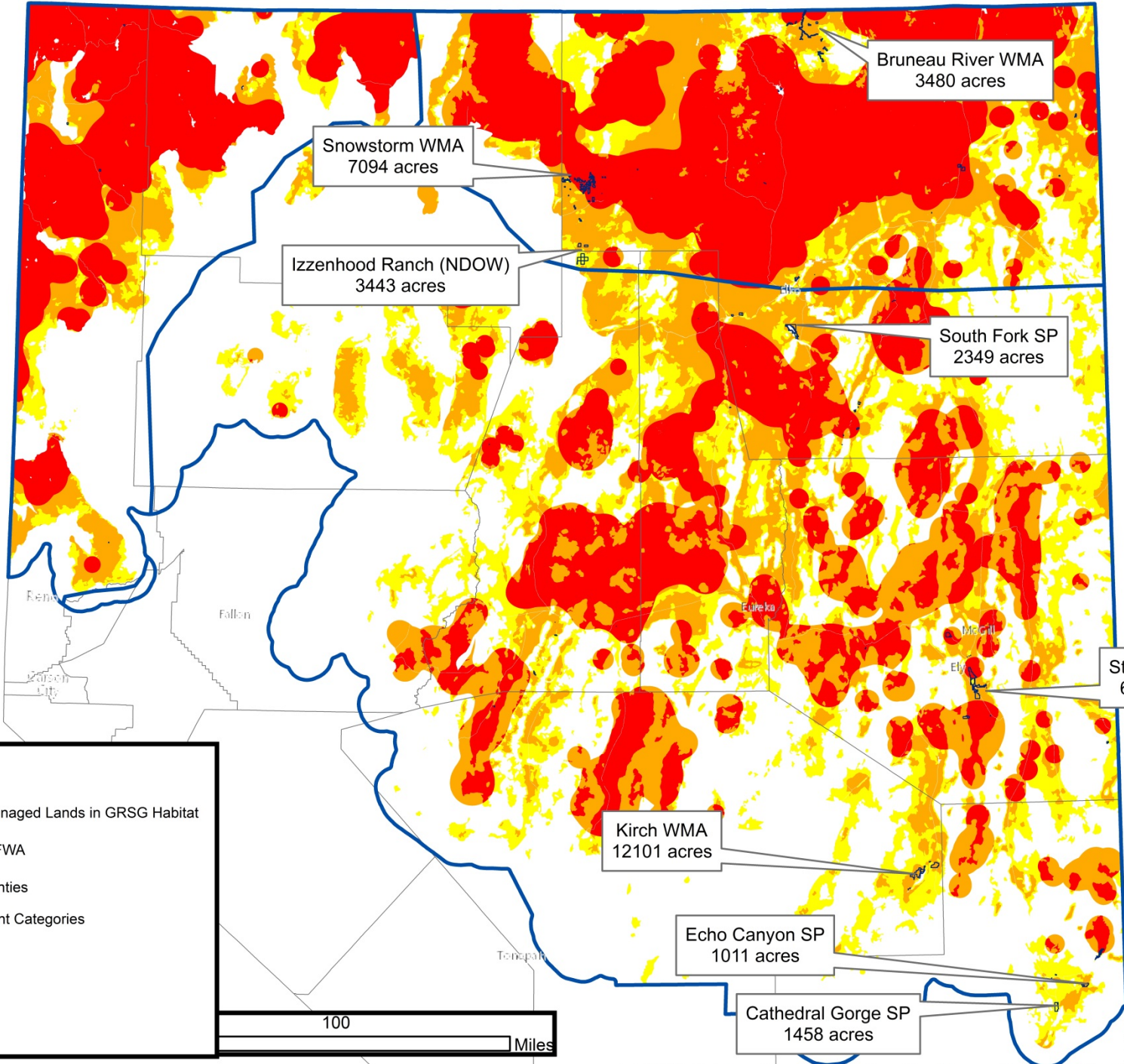
South Fork SP
2349 acres

Steptoe WMA
6092 acres

Kirch WMA
12101 acres

Echo Canyon SP
1011 acres

Cathedral Gorge SP
1458 acres



Suanak

Beha

Fallon







Eureka

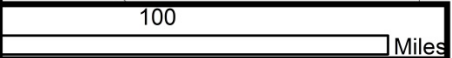
McCall

Ely

Tenopah

Legend

-  State Managed Lands in GRSG Habitat
-  NV_WAFWA
-  NV_Counties
- GRSG Management Categories**
-  PHMA
-  GHMA
-  OHMA



Bruneau River WMA
3480 acres

Snowstorm WMA
7094 acres

Izzenhood Ranch (NDOW)
3443 acres

South Fork SP
2349 acres

Steptoe WMA
6092 acres

Kirch WMA
12101 acres

Echo Canyon SP
1011 acres

Cathedral Gorge SP
1458 acres



State-Managed Lands in GRSG Habitat

- Coordinate with agency staff to assess the current habitat quality and determine if worthwhile opportunities exist to protect/enhance GRSG habitat.
- Assess State-managed lands >1,000 acres of GRSG habitat.
- Explore potential opportunities to fund conservation efforts.
- Ensure conservation efforts are documented.